

DROUGHT UPDATE



STAGE 2 WATER RESTRICTIONS FOR INDUSTRIAL, COMMERCIAL, AND RESIDENTIAL WATER CUSTOMERS

APRIL 2024

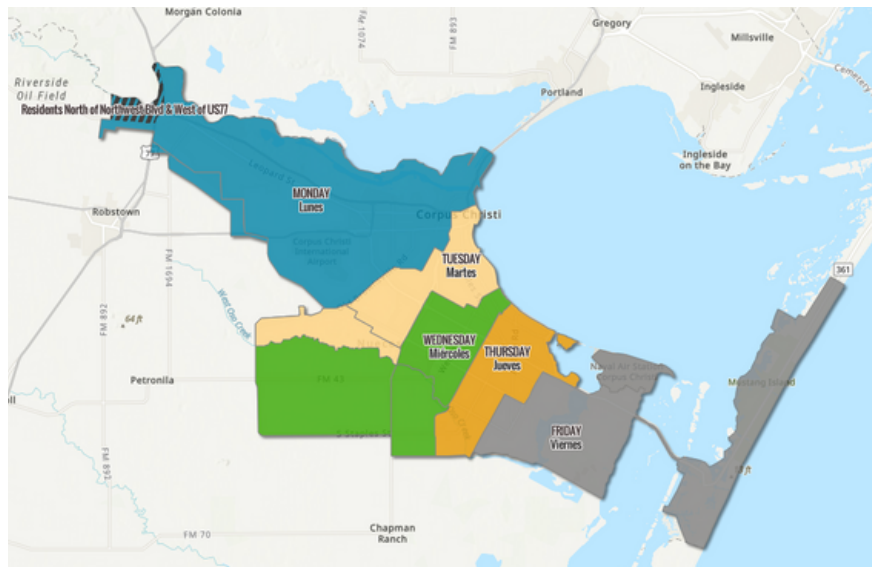
SUN	MON	TUES	WED	THURS	FRI	SAT
	1	2	3	4	5	6
7	NON-WATERING WEEK					13
14	15	16	17	18	19	20
21	NON-WATERING WEEK					27
28	29	30	1	2	3	4

WHAT DOES THIS MEAN?

Irrigate once every other week.

No irrigating with sprinklers after 10:00 a.m. or before 6:00 p.m.

Watering using a hand-held hose with a shut-off nozzle, a bucket, or drip irrigation system is allowed on any day at any time.



Do your part. Limit watering with a sprinkler system to once every other week.



DROUGHT UPDATE



STAGE 2 WATER RESTRICTIONS FOR INDUSTRIAL, COMMERCIAL, AND RESIDENTIAL WATER CUSTOMERS

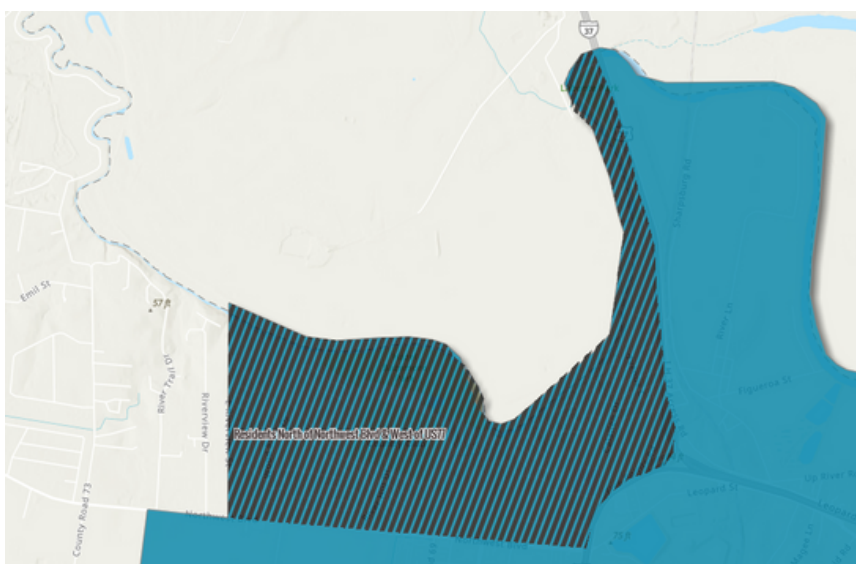
RESIDENTS NORTH OF NORTHWEST BLVD & WEST OF US77:

APRIL 2024

SUN	MON	TUES	WED	THURS	FRI	SAT
	1 EVEN NUMBER ADDRESSES	2	3 ODD NUMBER ADDRESSES	4	5	6
7	NON-WATERING WEEK					13
14	15 EVEN NUMBER ADDRESSES	16	17 ODD NUMBER ADDRESSES	18	19	20
21	NON-WATERING WEEK					27
28	29 EVEN NUMBER ADDRESSES	30	1 ODD NUMBER ADDRESSES	2	3	4

MONDAY FOR ADDRESSES
ENDING IN 0,2,4,6, OR 8

WEDNESDAY FOR ADDRESSES
ENDING IN 1,3,5,7, OR 9



WHAT DOES THIS MEAN?

Irrigate once every other week.

No irrigating with sprinklers after 10:00 a.m. or before 6:00 p.m.

Watering using a hand-held hose with a shut-off nozzle, a bucket, or drip irrigation system is allowed on any day at any time.

Do your part. Limit watering with a sprinkler system to once every other week.



CCW Corpus Christi Water
Serving the Coastal Bend

www.cctexas.com/conserves