



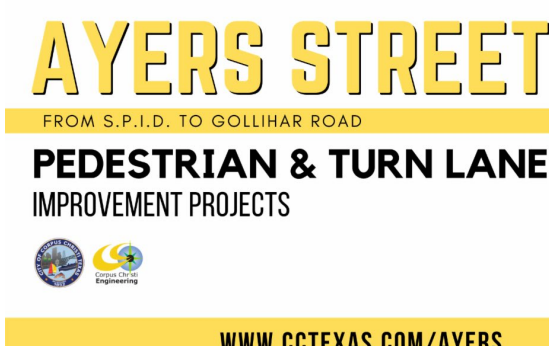
## Welcome to the Corpus Christi Cone Zone Ayers Edition

The latest information on the Ayers Pedestrian project direct to your inbox!

### Construction Updates

#### AT&T Telephone Cable Lowering Complete

This week AT&T completed the lowering of telephone lines along the west side of Ayers Street. The General Contractor continued street excavation and the lowering of sanitary manholes. Next week, the sanitary manhole work and the storm water work will continue along the West side of Ayers Street.



Safety is a top priority, so motorists and pedestrians are reminded to be aware of the work zone, follow all traffic control devices, and use alternate routes to avoid delays.

All work is weather permitting.

#### Closures & Changes Include:

- Johanna Street to Crosstown/SPID Interchange (Northbound) – The outside thru lane on Ayers Street will be closed approaching the Crosstown/SPID interchange. This lane closure will continue through the underpass of SPID. This closure will not impact access to the eastbound frontage road.
- Johanna Street to Crosstown/SPID Interchange (Southbound) - The left turn lane and median openings will be closed.
- Crosstown/SPID Interchange to McArdle Road – Northbound Ayers Street will be CLOSED at the Crosstown/SPID Interchange intersection. Motorists must use alternate detour routes such as the SH 286 northbound frontage road, Gollihar Road, Kostoryz Road, or McArdle Road to access local businesses between the frontage road and McArdle Road.
- McArdle Road to Gollihar Road (Northbound) – Ayers Street will be closed to northbound thru traffic at the intersection at McArdle Road. Thru traffic is required to follow the McArdle Road detour and avoid local and residential side streets.
- McArdle Road to Gollihar Road (Southbound) - Ayers Street will be reduced to one lane, one-way traffic flow in the southbound direction only. Access to all local businesses is provided.
- Ayers Street and Gollihar Road Intersection – The outside thru lane on Ayers Street, in the southbound direction only, will be closed approaching the Gollihar Road intersection.
- SH 358 Frontage Road (Eastbound) – The shared thru left turn lane will be closed.

#### Email Updates - Tell Your Neighbors To Sign Up!



Good News! You are already receiving the email alerts for construction. We need your help in spreading the word to neighboring businesses on Ayers.

[Sign Up for Email News](#)

### Business Feature

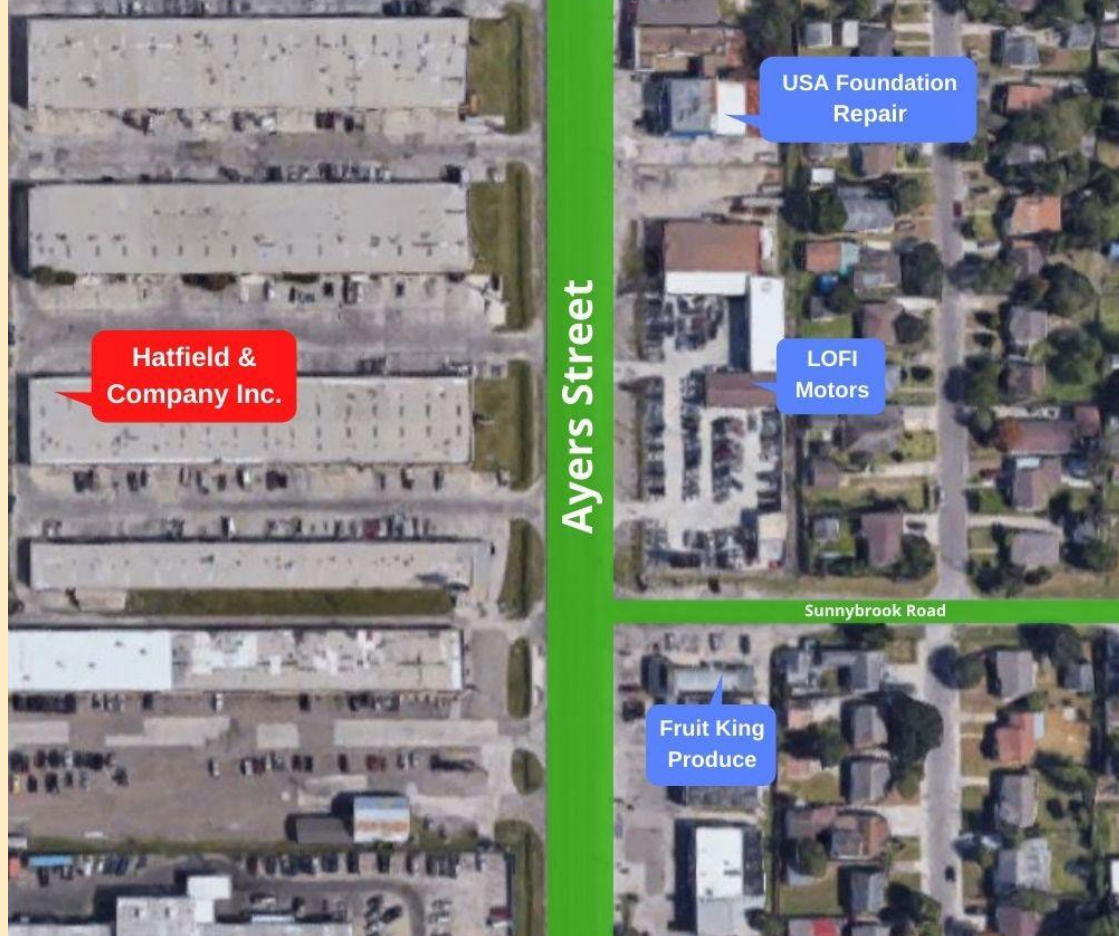
#### Longtime Industrial Parts Distributor on Ayers Street

Hatfield & Co. Inc. has been servicing Coastal Bend industry as a distributor of oil and gas industrial parts and equipment for several years. Their local branch is located at 4531 Ayers Street, Suite 232. Corporate office manager, Melissa Dencker says that Hatfield & Co. Inc. has been operating in Texas for over 60 years and values it's business in the Corpus Christi area. While their business has not been impacted by construction on Ayers Street, Hatfield & Co. Inc. looks forward to increased accessibility and overall improvements to the street once construction is completed.

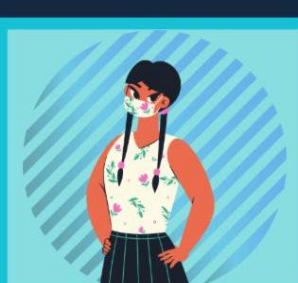
Companies based in and around Corpus Christi interested in sourcing industrial equipment and parts through Hatfield & Co. Inc. can reach the local branch, which is open Monday – Friday, 8am – 5pm, by calling 361-853-5200.



#### 4531 Ayers Street, Suite 232



## The Three Ws



**Wear a Mask**



**Watch your Distance**



**Wash your Hands**



Slow the spread of COVID-19. Please continue to wear a mask, watch your distance & wash your hands often.

[www.cctexas.com/coronavirus](http://www.cctexas.com/coronavirus)



#### Calling Ayers Businesses

We are looking for businesses along the Ayers Construction corridor who would like to be featured in an upcoming newsletter. The feature is free and open to all businesses along the construction path. Email us at [MelanieL@cctexas.com](mailto:MelanieL@cctexas.com) to let us know you would like to participate.