



Welcome to the Corpus Christi Cone Zone Ayers Edition

The latest information on the Ayers Pedestrian project direct to your inbox!

Construction Updates

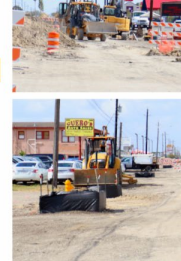
Excavation & Road Base Installation Progresses Toward Gollihar Road!

This week, the contractor began work on grading for new sidewalk and driveways on the east side of Ayers Street between Nemece Street to McArdle Road. Additionally, road excavation and limestone road base placement continues from Mansheim Boulevard to Gollihar Road.

AYERS STREET FROM S.P.I.D. TO GOLLIHAR ROAD PEDESTRIAN & TURN LANE IMPROVEMENT PROJECTS



WWW.CCTEXAS.COM/AYERS



Next week, the contractor plans to continue grading for new sidewalk and gutters on the east side of Ayers Street from McArdle Road to Sunnybrook Road. Weather permitting, scheduled work on sidewalk and driveways will continue. Additionally, road excavation and limestone road base placement will continue from Sunnybrook Road to Gollihar Road.

All work is weather permitting.

Safety is a top priority, so motorists and pedestrians are reminded to be aware of the work zone, follow all traffic control devices, and use alternate routes to avoid delays.

Traffic Changes & Lane Closures:

- Northbound Ayers Street is closed at the Crosstown/SPID Interchange (frontage road) intersection. Thru traffic is encouraged to seek alternate routes to access businesses in the area.
- Ayers Street is also reduced to one lane, one-way traffic from Gollihar Road to SPID (southbound direction only).
- Johanna Street to Crosstown/SPID Interchange (Northbound) – The outside thru lane on Ayers Street is closed approaching the Crosstown/SPID interchange. This lane closure will continue through the underpass of SPID. This closure will not impact access to the eastbound frontage road of SPID.
- Johanna Street to Crosstown/SPID Interchange (Southbound) - The left-turn lane and median openings are closed.
- Crosstown/SPID Interchange & Ayers Street Intersection (Northbound) – Northbound Ayers Street is CLOSED at the Crosstown/SPID Interchange intersection. Motorists must use alternate detour routes such as the SH 286 northbound frontage road, Gollihar Road, Kostoryz Road, or McArdle Road to access local businesses.
- Crosstown/SPID Interchange to Gollihar Road – Ayers Street is reduced to one lane, one-way traffic flow in the southbound direction only. Access to all local businesses is provided.
- Ayers Street and Gollihar Road Intersection – The outside thru lane on Ayers Street, in the southbound direction only, is closed approaching the Gollihar Road intersection.
- SH 358 Frontage Road (Eastbound) – The shared thru left-turn lane is closed.

RTA bus stops are closed from Gollihar Road to SPID. Bus stops remain open at the Port Ayers Transfer Station.

Email Updates - Tell Your Neighbors To Sign Up!



Good News! You are already receiving the email alerts for construction. We need your help in spreading the word to neighboring businesses on Ayers.

[Sign Up for Email News](#)

Business Feature

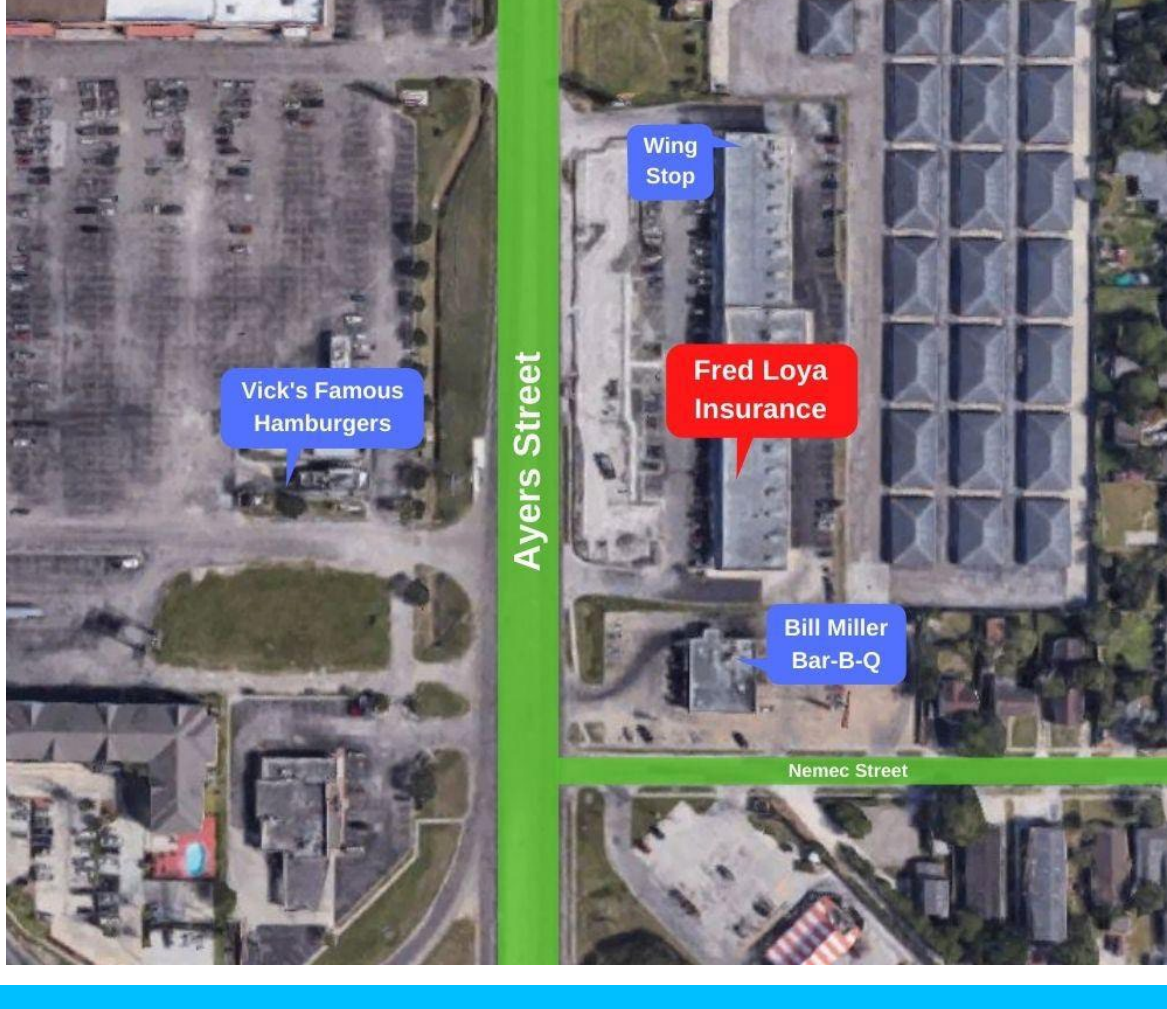
Business at Local Insurance Branch Remains Unaffected by Ayers Street Construction Project

The Fred Loya Insurance branch located at 4918 Ayers Street, Suite 134, remains unaffected by the Ayers Street construction project. Monica Espinoza is the Manager at this local branch, and staff at Fred Loya Insurance look forward to the completion of construction and enjoying the results of the finished project.

Providing vehicle liability and homeowners insurance to new customers and continuing services to existing clients are top priorities for customer service representatives at this location. Fred Loya Insurance offers all their essential services online at www.fredloya.com and over the phone. Customers are advised to call **361-855-5500** to make an in-person appointment and to get more details on service options at the Ayers location. Their hours of operation are Monday – Friday from 9am to 6pm and Saturdays 9am to 2pm.

FRED LOYA INSURANCE

4918 Ayers Street, Suite 134



City Information

MAINTAIN ROAD SAFETY

- WEAR A SEAT BELT
- DON'T TEXT OR TALK ON CELL PHONE WHILE DRIVING
- FOLLOW SPEED LIMITS AND RULES OF THE ROAD
- SLOW DOWN AT INTERSECTIONS
- YIELD TO PEDESTRIANS
- BE ALERT AT ALL TIMES
- PLAN AHEAD FOR POOR WEATHER CONDITIONS

WWW.CCTEXAS.COM/VISIONZERO

Numerous showers and storms are expected to continue through the weekend, per the **US National Weather Service Corpus Christi Texas**. Please use extra caution on the roadway. Together, we can make sure everyone arrives at their destination safely.

www.cctexas.com/visionzero
[#VisionZeroCC](#) [#VisionZero](#)

DID YOU KNOW?

12 INCHES OF FAST-MOVING WATER CAN CARRY AWAY A SMALL CAR.

18-24 INCHES OF FAST-MOVING WATER CAN CARRY AWAY MOST VANS, TRUCKS, AND SUVs.

6 INCHES OF FAST-MOVING WATER CAN KNOCK OVER AND CARRY AWAY AN ADULT.

**TURN AROUND,
DON'T DROWN.**

Remember, never drive down a flooded road.

[#TurnAroundDontDrown](#)
[#CCtraffic](#) [#CCstreets](#)

Get YOUR business featured in the Ayers Newsletter!



Businesses located along the Ayers Street construction path are encouraged to 'spotlight' their business in the Ayers Newsletter! The Business Feature is **FREE** and a convenient phone interview only takes 5-10 minutes. Let our readers know you are open and operating!

EMAIL US!

Email CynthiaG2@cctexas.com to let us know you would like to participate.