

- NOTES:**
- REFER TO SHEET 82 FOR TRAFFIC CONTROL ADVANCE WARNING PLAN, LEGEND, AND ABBREVIATIONS.
  - CONTRACTOR MUST ADJUST SPACING OF CHANNELIZING DRUMS AND TRAFFIC SIGNAGE TO ALLOW ACCESS TO ALL DRIVEWAY LOCATIONS.
  - OBLITERATION OF EXISTING CONFLICTING MARKINGS AND PLACEMENT OF WORK ZONE STRIPING (TRAFFIC BUTTONS) IS REQUIRED FOR ALL LANE SHIFTS AND TRANSITIONS OR WHERE INDICATED ON PLANS.
  - CONTRACTOR SHALL INSTALL TEMPORARY TRAFFIC SIGNAL FOR THE DURATION OF TRAFFIC CONTROL AND ADJUST IT AS NEEDED THROUGHOUT THE DIFFERENT PHASES OF THE TCP. THE TEMPORARY TRAFFIC SIGNAL SHALL BE SPAN WIRE TEMPORARY TRAFFIC SIGNAL OR PORTABLE TEMPORARY TRAFFIC SIGNAL. ADJUSTMENT TO THE EXISTING TRAFFIC SIGNALS ARE NOT ACCEPTABLE FOR TCP SIGNAL CONTROL. (VEHICLE SIGNAL HEADS SHALL BE IN THE CENTER OF TRAVEL LANES).



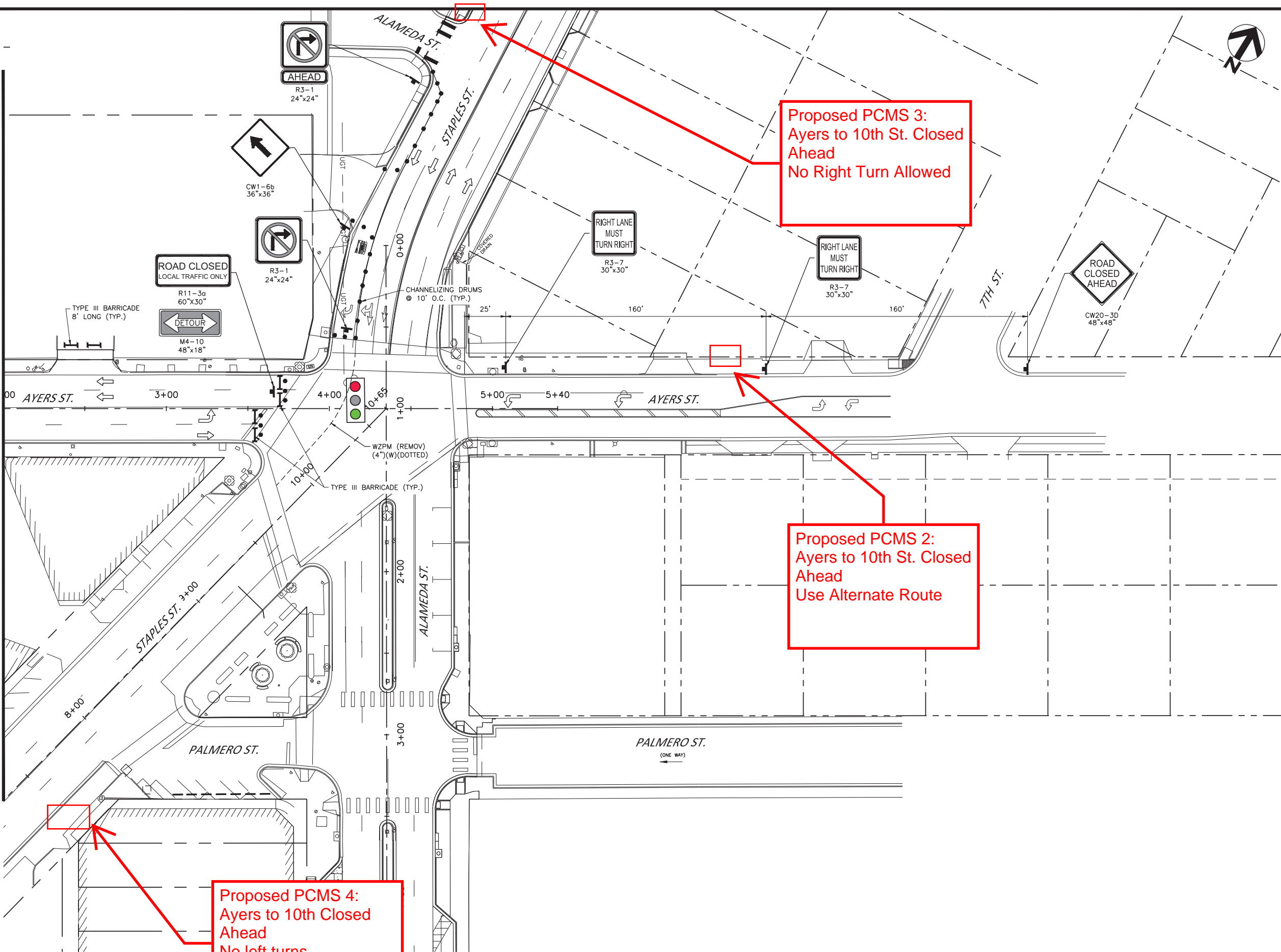
**Proposed PCMS 1:  
Ayers at 10th St Closed Ahead  
Use Brownlee Blvd  
Detour**

**TRAFFIC CONTROL PLAN - PHASE 1A**  
SCALE: 1" = 30'  
HORIZONTAL SCALE

MATCHLINE STA. 2+00 (SHEET 86)

|  |      |   |             |
|--|------|---|-------------|
| CONSULTANT'S SHEET No.                                 |      | FNI PROJECT: COR19259   |             |
|  |      | 9-1-2020<br>Freese and Nichols, Inc.<br>Texas Registered Engineering Firm F-2144                                      |             |
|  |      | 800 N. Shoreline Blvd. Suite 1600N Corpus Christi, Texas 78401-3717<br>Phone - (361) 561-6500<br>Fax - (361) 561-6501 |             |
|  |      | CITY of CORPUS CHRISTI TEXAS<br>Department of Engineering Services  |             |
| SIX POINTS INTERSECTION STREET AND SIGNAL IMPROVEMENTS |      | TRAFFIC CONTROL PLAN PHASE 1A-(01)  |             |
| SHEET 85 of 146  |      | RECORD DRAWING NO.  |             |
| STR-960  |      | CITY PROJECT # E17036   |             |
| REVISION NO.   | DATE | BY  | DESCRIPTION |
|  |      |   |             |
|  |      |   |             |
|  |      |   |             |

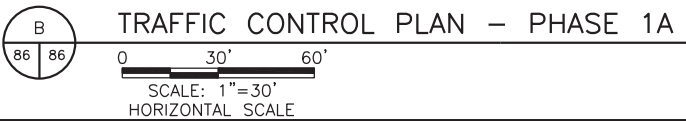
MATCHLINE STA 2+00 (SHEET 85)



**Proposed PCMS 4:**  
 Ayers to 10th Closed  
 Ahead  
 No left turns

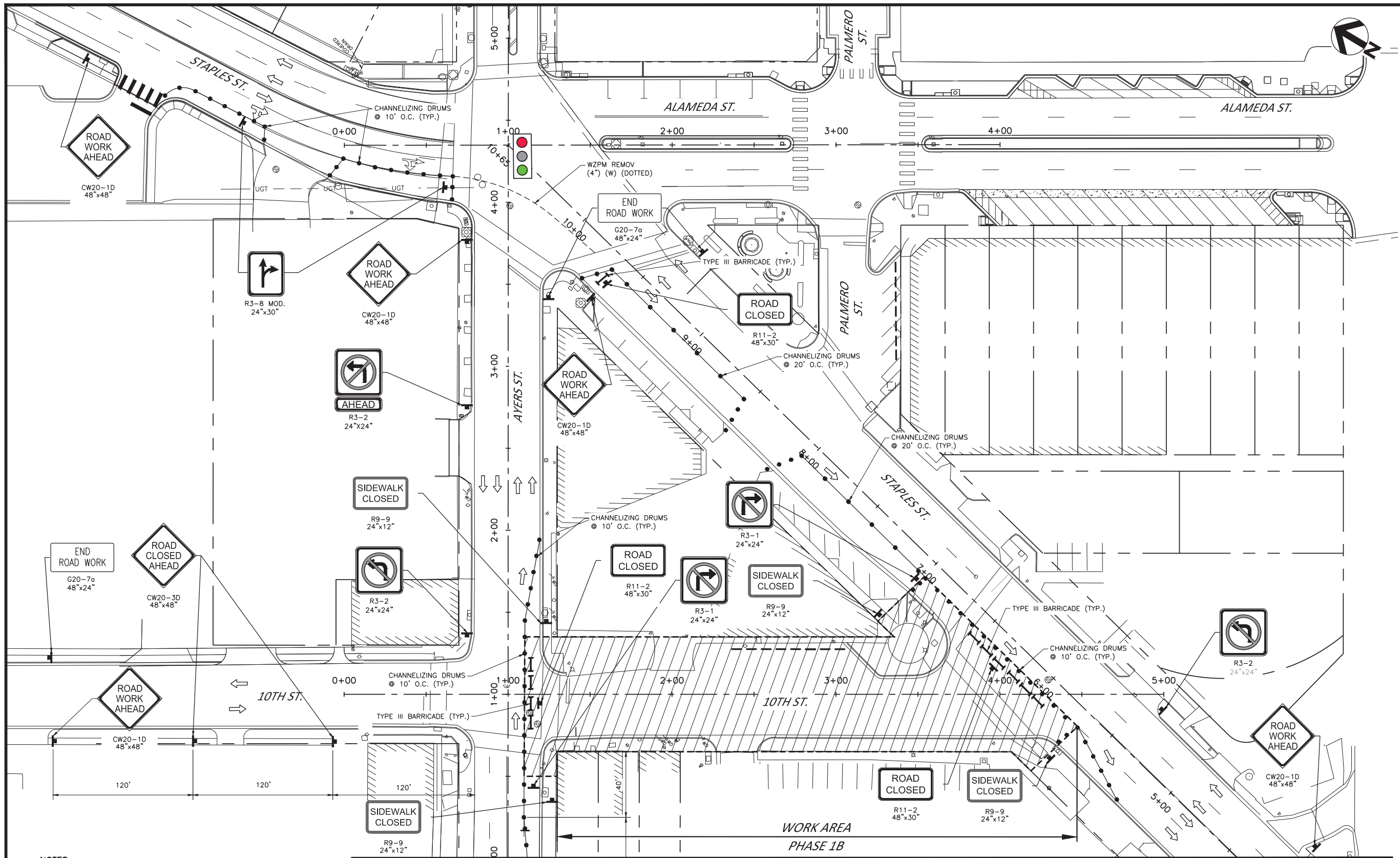
**Proposed PCMS 2:**  
 Ayers to 10th St. Closed  
 Ahead  
 Use Alternate Route

**Proposed PCMS 3:**  
 Ayers to 10th St. Closed  
 Ahead  
 No Right Turn Allowed



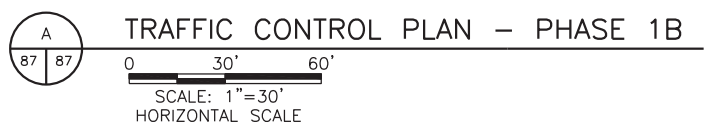
|  |      |   |             |
|--|------|---|-------------|
| CONSULTANT'S SHEET No.                                 |      | FNI PROJECT: COR19259   |             |
|  |      |   |             |
|  |      | CITY of CORPUS CHRISTI<br>TEXAS<br>Department of Engineering Services |             |
| SIX POINTS INTERSECTION STREET AND SIGNAL IMPROVEMENTS |      | TRAFFIC CONTROL PLAN PHASE 1A-(02)                                    |             |
| SHEET 86 of 146  |      | RECORD DRAWING NO. STR-960  |             |
| CITY PROJECT # E17036                                  |      |   |             |
| REVISION NO.   | DATE | BY  | DESCRIPTION |
|  |      |   |             |





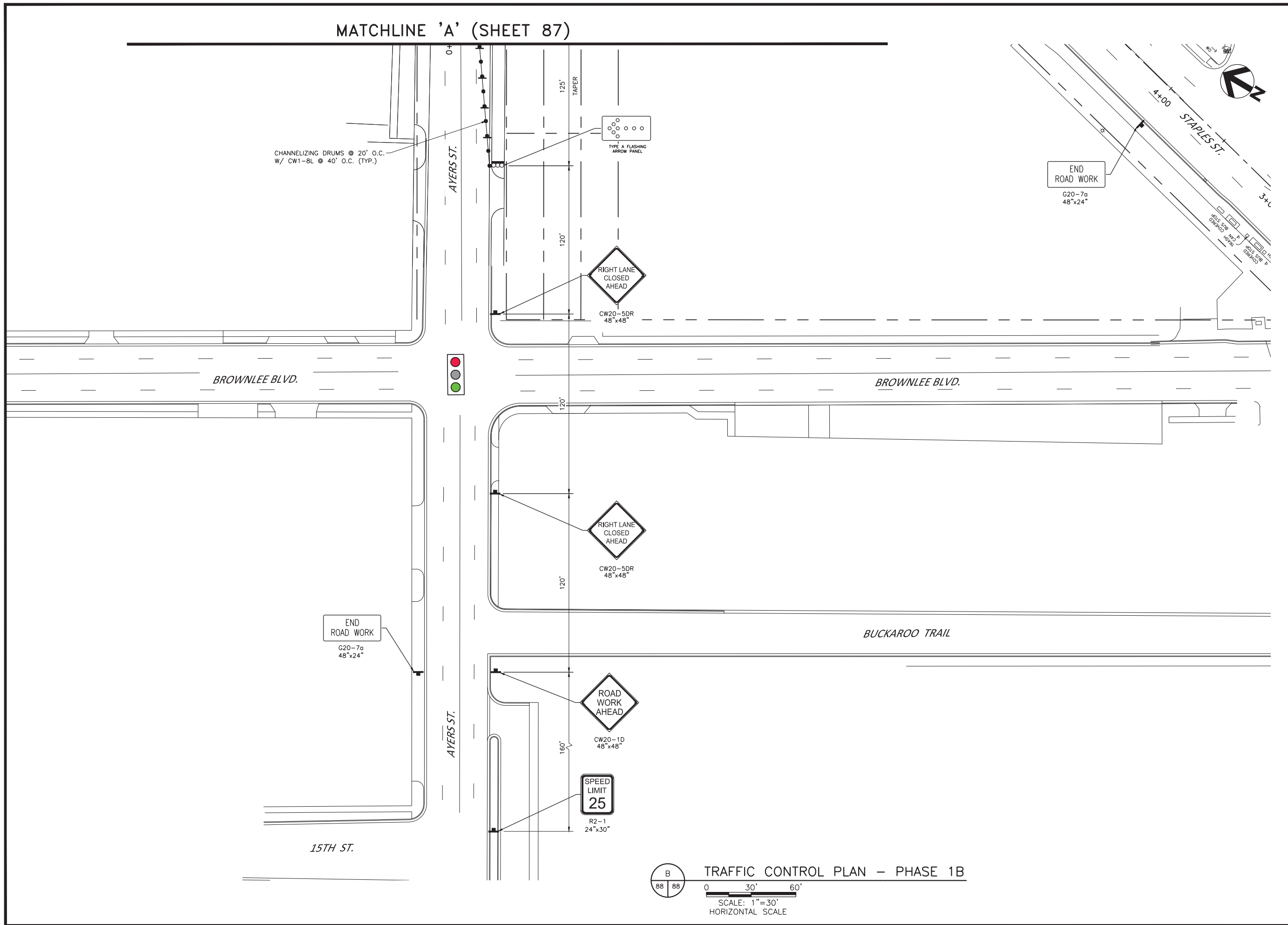
- NOTES:**
- REFER TO SHEET 82 FOR TRAFFIC CONTROL ADVANCE WARNING PLAN, LEGEND, AND ABBREVIATIONS.
  - CONTRACTOR MUST ADJUST SPACING OF CHANNELIZING DRUMS AND TRAFFIC SIGNAGE TO ALLOW ACCESS TO ALL DRIVEWAY LOCATIONS.
  - OBLITERATION OF EXISTING CONFLICTING MARKINGS AND PLACEMENT OF WORK ZONE STRIPING (TRAFFIC BUTTONS) IS REQUIRED FOR ALL LANE SHIFTS AND TRANSITIONS OR WHERE INDICATED ON PLANS.
  - CONTRACTOR SHALL INSTALL TEMPORARY TRAFFIC SIGNAL FOR THE DURATION OF TRAFFIC CONTROL AND ADJUST IT AS NEEDED THROUGHOUT THE DIFFERENT PHASES OF THE TCP. THE TEMPORARY TRAFFIC SIGNAL SHALL BE SPAN WIRE TEMPORARY TRAFFIC SIGNAL OR PORTABLE TEMPORARY TRAFFIC SIGNAL. ADJUSTMENT TO THE EXISTING TRAFFIC SIGNALS ARE NOT ACCEPTABLE FOR TCP SIGNAL CONTROL, (VEHICLE SIGNAL HEADS SHALL BE IN THE CENTER OF TRAVEL LANES).

MATCHLINE 'A' (SHEET 88)



|   |  |   |      |
|---|--|---|------|
| CONSULTANT'S SHEET No.  |  | FNI PROJECT: COR19259   |      |
|   |  |   |      |
| DESCRIPTION   |  | REVISION NO.  | DATE |
|   |  | <b>CITY of CORPUS CHRISTI TEXAS</b><br>Department of Engineering Services |      |
| SIX POINTS INTERSECTION STREET AND SIGNAL IMPROVEMENTS<br>TRAFFIC CONTROL PLAN<br>PHASE 1B-(01) |  | REVISION NO.  | DATE |
| SHEET 87 of 146<br>RECORD DRAWING NO.<br><b>STR-960</b><br>CITY PROJECT # E17036                |  | BY  | DATE |

MATCHLINE 'A' (SHEET 87)



**B**  
88 88

TRAFFIC CONTROL PLAN - PHASE 1B

0 30' 60'

SCALE: 1"=30'  
HORIZONTAL SCALE

| REVISION NO. | DATE | BY | DESCRIPTION |
|--------------|------|----|-------------|
|              |      |    |             |
|              |      |    |             |
|              |      |    |             |

|  |   |  |
|--|---|--|
| <p>Bar is one inch on original drawing. If not one inch on this sheet, adjust scale.</p> <p>VERIFY SCALE</p> | <p>SIX POINTS INTERSECTION STREET AND SIGNAL IMPROVEMENTS</p> <p>TRAFFIC CONTROL PLAN PHASE 1B-(02)</p> | <p>CONSULTANT'S SHEET No.<br/>FNI PROJECT: COR19259</p> <p>9-1-2020</p> <p>NICHOLAS A. CECANA<br/>PROFESSIONAL ENGINEER<br/>9739<br/>STATE OF TEXAS</p> <p>Freese and Nichols, Inc.<br/>Texas Registered Engineering Firm F-2144</p> |
| <p>CITY of CORPUS CHRISTI TEXAS<br/>Department of Engineering Services</p>                                   | <p>SHEET 88 of 146<br/>RECORD DRAWING NO.<br/>STR-960<br/>CITY PROJECT # E17036</p>                     | <p>800 N. Shoreline Blvd. Suite 1600N Corpus Christi, Texas 78401-3717<br/>Phone - (361) 561-6500<br/>Fax - (361) 561-6501</p>   |