



Aerial – Industrial District Tracts



Tract 1: ABTEX, 1.09 acres northeast of the Veterans Cemetery
Company Defunct, Taxes Delinquent



Tract 2: Coastal State Petroleum, 0.96 acres northeast of Up River Road and Navigation Blvd.
Prefers Annexation



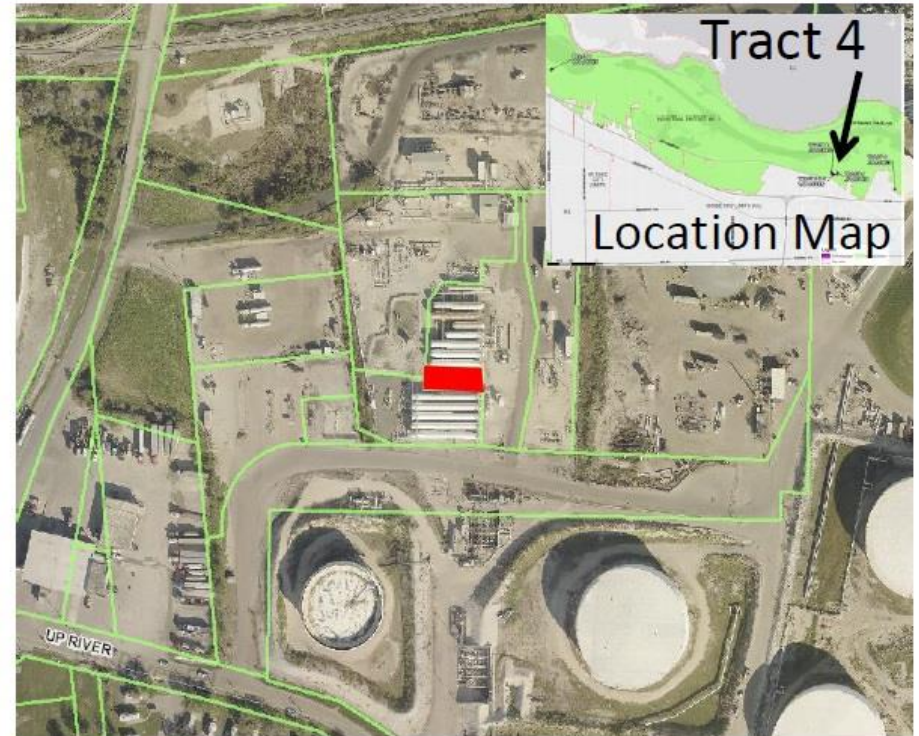


Aerial – Industrial District Tracts



Tract 3: Coastal States Petroleum, 0.58 acres
acres northeast of Up River Road and
Navigation Blvd.

Prefers Annexation



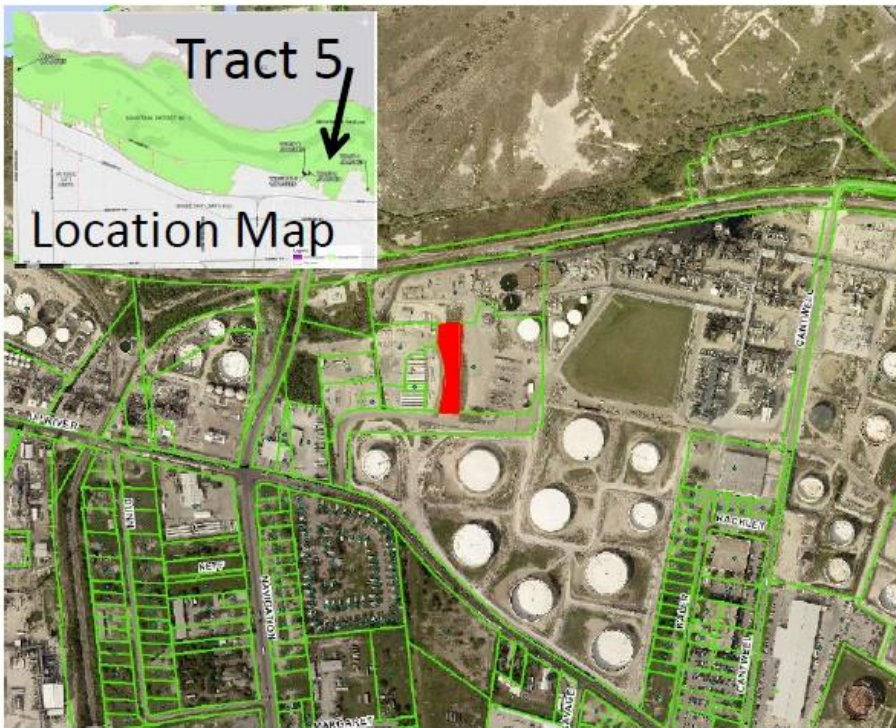
Tract 4: Coastal Liquids Partners, 0.10 acres
northeast of Up River Road and Navigation
Blvd.

No Claim of Ownership





Aerial – Industrial District Tracts



Tract 5: Coastal Liquids Partners, 0.92 acres
northeast of Up River Road and Navigation Blvd.
No Claim of Ownership



Tract 6: Exxon Pipeline, 0.18 acres, south of
the intersection of Buddy Lawrence and Oak
Park Roads
Prefers Annexation





Aerial – Industrial District Tracts



Tract 7: Koch Gathering Sys Inc., 0.25 acres,
south of the intersection of Buddy Lawrence
and Oak Park Roads and next to Tract 6

Prefers Annexation

